

DIETA HIPERLIPÉMICA SIN SUPLEMENTACIÓN DE CARBOHIDRATOS: EFECTO SOBRE EL TEJIDO HEPÁTICO EN CONEJOS ADULTOS NEOZELANDESES



Heredia, Rocío Miranda

Elias, María Lucía

Mussi, Jesica Anabella

Pérez, Franco

Boarelli, Paola Vanina

Avena, María Virginia

Funes, Abi Karenina

Fornés, Miguel Walter

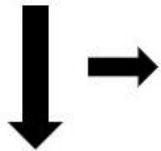
Sáez Lancellotti, Tania





DIETAS

MODELO ANIMAL
CONEJO MACHO ADULTO
NEW ZELAND



- ✓ PESO
- ✓ PRESIÓN ARTERIAL MEDIA

SANGRE PERIFÉRICA

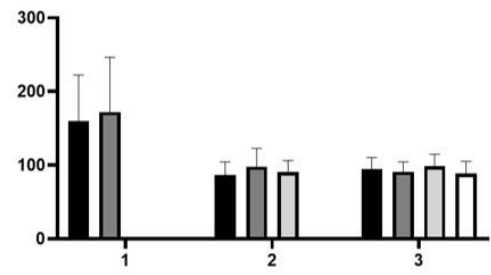
- ✓ DETERMINACIONES BIOQUÍMICA/HORMONALES
GLUCOSA- COLESTEROL – TRIGLICÉRIDOS – HDL COLESTEROL – ENZIMAS HEPÁTICAS
INSULINA

TEJIDOS
(12 meses)

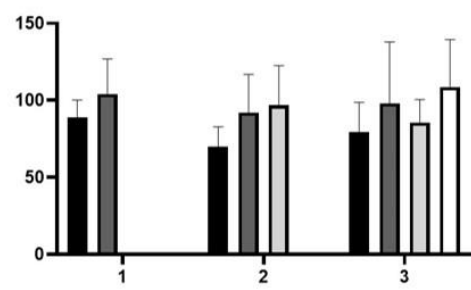
- ✓ HIGADO
INMUNOHISTOQUÍMICA
HISTOQUÍMICA (cortes por congelación)
EXTRACCIÓN DE ARNm/PROTEINAS

DETERMINACIONES BIOQUÍMICAS

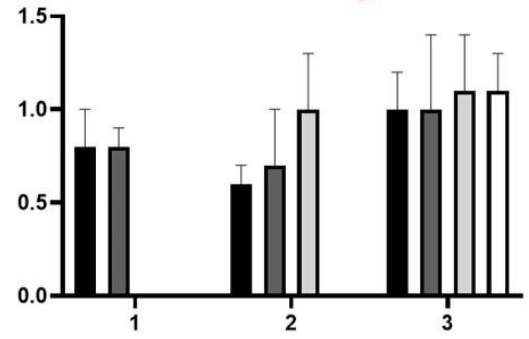
GLUCEMIA (mg/L)



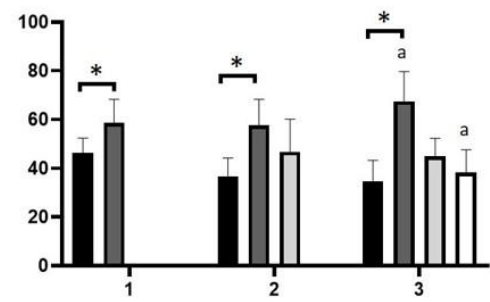
TRIGLICERIDEMIA (mg/L)



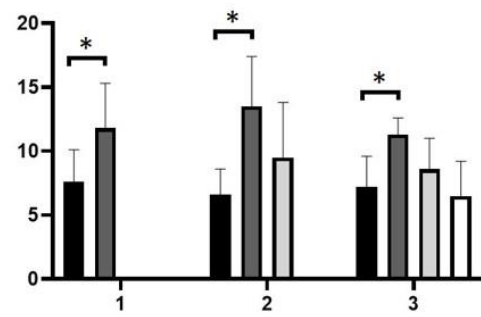
RELACIÓN GOT/GPT



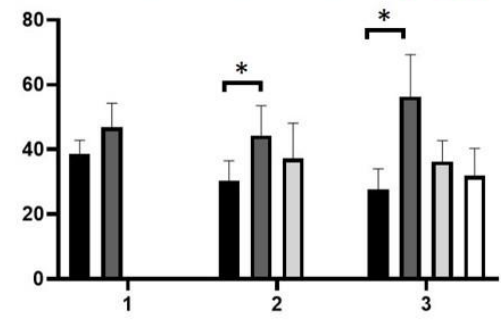
COLESTEROLEMIA (mg/L)



HDL-COLESTEROLEMIA (mg/L)



No HDL-COLESTEROLEMIA (mg/L)



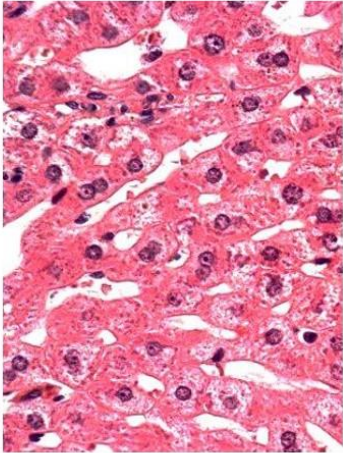
C
 G
 MG
 MGAO

1,2,3: TRIMESTRES

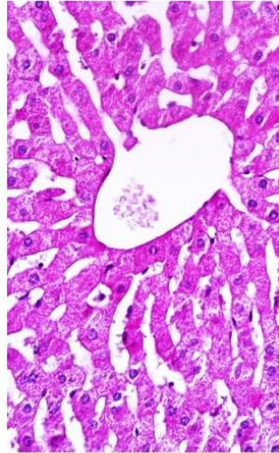
TEJIDO HEPÁTICO (ESTUDIO HISTOLÓGICO)

DIETA ESTÁNDAR

PARAFINA



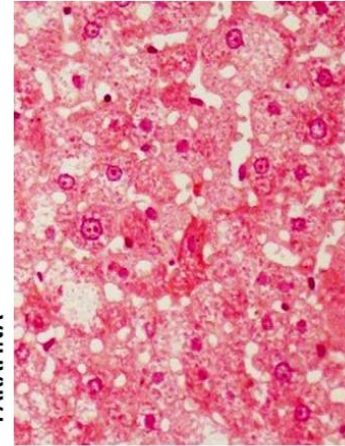
HE (40X)



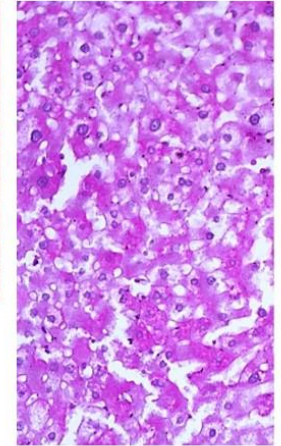
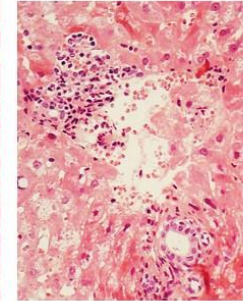
PAS (20X)

DIETA GRASA

PARAFINA

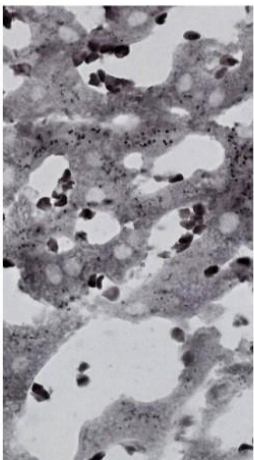


HE (40X)

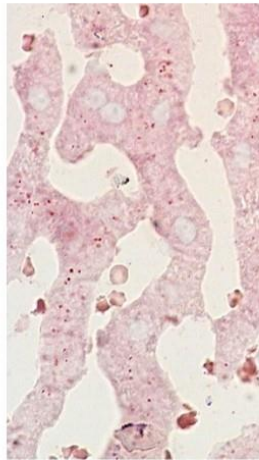


PAS (20X)

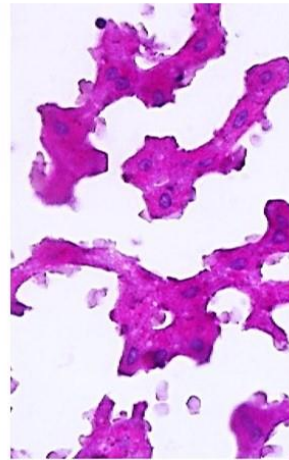
CONGELACIÓN



SUDAN BLACK (40X)

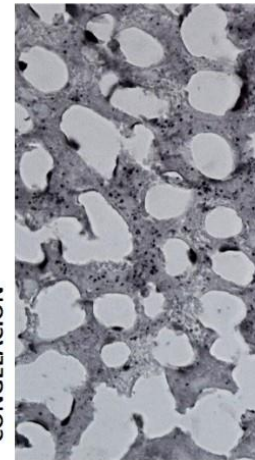


OIL RED O (40X)

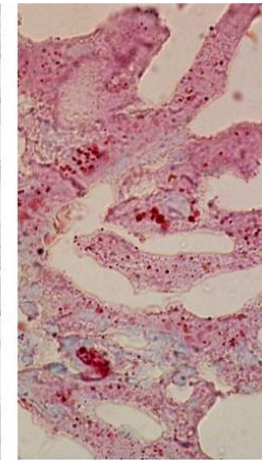


PAS (40X)

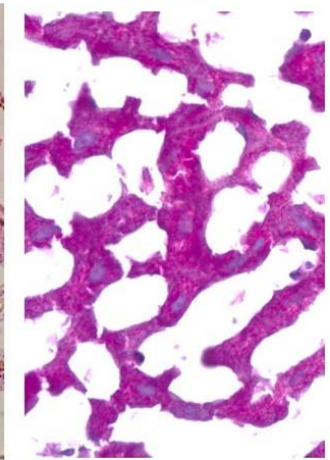
CONGELACIÓN



SUDAN BLACK (40X)



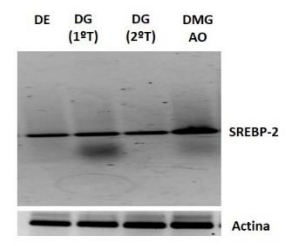
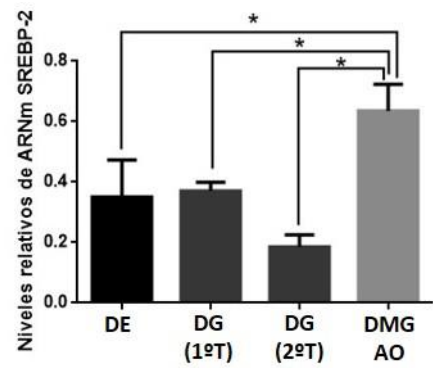
OIL RED O (40X)



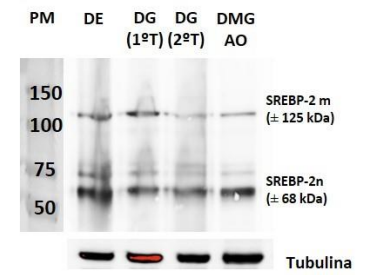
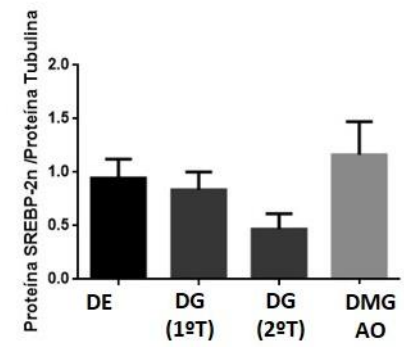
PAS (40X)

TEJIDO HEPÁTICO (ESTUDIO MOLECULAR)

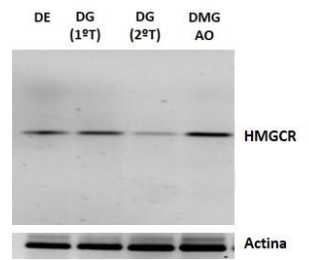
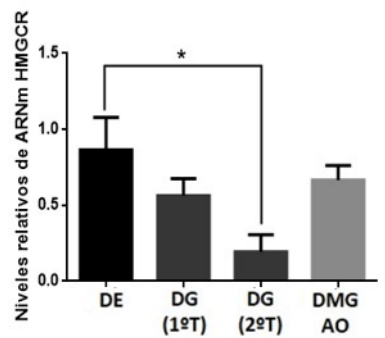
ARNm SREBP₂



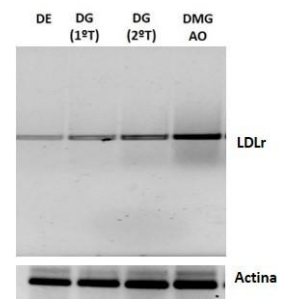
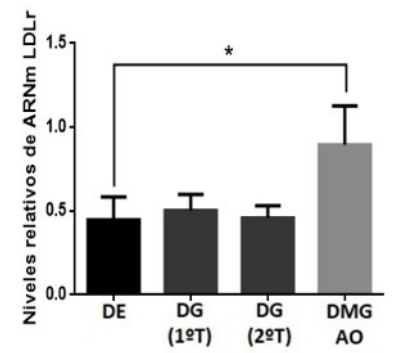
Proteína SREBP₂



ARNm HMGCR



ARNm LDLr



-Las dietas hiperlipémicas sin inducción de síndrome metabólico por la adición de carbohidratos muestran perfiles bioquímicos propios.

-A nivel hepático no muestra esterosis macrovesicular ni colestasis dentro de los 12 meses de consumo. En su análisis molecular se observa cambios en la regulación de la síntesis celular de colesterol y de la expresión de LDLr con los diferentes cambios dietarios.

-Estos resultados preliminares en el tejido hepático nos permiten correlacionar los resultados bioquímicos con el estado de dislipidemia adquirida sin la influencia de carbohidratos.

¡MUCHAS GRACIAS!